

Union ★  
Update

OPEIU  
Local



*For Local 8 Members at Crisis Connections*

*November 8, 2021*

## What Are You Feeling Thankful For? What's Providing You Hope? What Inspires You?

Times are tough. Understaffing and low pay unnecessarily complicate our lives, the weather has turned cool, wet, and gray, and the Seahawks haven't started the season off strong.

We could all use some encouragement! With Thanksgiving\* just around the corner, we thought it would be nice to hear what members are feeling grateful for, specifically with regard to the Union, our colleagues, and the work we do here at Crisis Connections.



From now until **12pm on Friday November 19th**, take a moment to let us know something or someone you are thankful for related to work, contract negotiations, and/or OPEIU LOCAL 8. Email your submission to [valarie@opeiu8.org](mailto:valarie@opeiu8.org) for a chance to

win a **\$75 gift card** to a union grocery store (e.g., QFC, Safeway, Fred Meyer) to put toward a holiday meal, or whatever else you'd like to spend it on!



This contest is open only to OPEIU members (i.e., non-managerial employees) at Crisis Connections. Members who email submissions by the deadline will have their names added to the “hat.” You are more than welcome to send multiple submissions, but your name will only be entered once. Content submitted may be highlighted in upcoming union updates, social media posts, etc.



**On Friday, November 19th, four names will be randomly drawn, and each winner will receive a gift card from OPEIU LOCAL 8!**

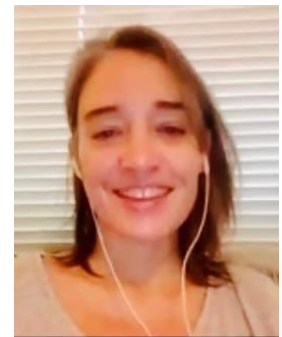


*“I’m thankful the Union has given many of us hope at Crisis Connections. Hope for a better and more livable future! We no longer have to look away, accept powerlessness, or submit to resignation. This moment is dedicated to the development and sustenance of workers’ power and that feels good!”*

**-Geoffrey Mattens, Benefits Access/Recovery Specialist**

*“I’m grateful for the volunteers at Crisis Connections who devote their time and energy to our agency. They are so amazing! I’m also inspired by my talented and hardworking co-workers and the union which provides us with a process to bargain collectively and enables us to have a real voice at work.”*

**-Carly Howard, Mentor**





*"I'm thankful employees at Crisis Connections chose to form a union with OPEIU LOCAL 8. We are excited to have you join our labor family! And as we fight for a fair first contract that solidifies and improves working conditions, I'm especially thankful for the smart, compassionate, and fiery bargaining team and membership base that won't settle for less than what's deserved. The charge ahead is all about collective action, coworkers standing up and supporting each other, and fighting for the things that are important to us!"*

**-Valarie Peaphon, Union Representative, OPEIU LOCAL 8**

\*It can be difficult to reconcile the idea of Thanksgiving as a time of gratitude, good food, and loved ones coming together with the holiday's harmful history. However, Thanksgiving myths serve to perpetuate the ongoing erasure of Indigenous peoples. It's important to recognize the true history of Thanksgiving by talking about what really happened: White settlers dispossessed Native peoples from their land through forced removals, genocide, sterilization, assimilation, and other violent tactics.

To acknowledge the real story of our country's past and present, consider how you can honor Indigenous life today and into the future. November is Native American Heritage



Month, which provides ample opportunities to learn about and support Native populations. A good place to start is with the land beneath your feet. Wherever you are in North America, you are on Indigenous land. Use [Native Land Digital](#) or text your zip code to the [Land Acknowledgment Bot](#) at 907-312-5085 to learn more about the original inhabitants of your region.

People who live and work in Seattle can stand in solidarity with the original stewards of this land by paying **Real Rent**. To help support the revival of Duwamish culture and the vitality of the Duwamish Tribe, visit [Real Rent Duwamish](#).

**Contact the Union Bargaining Team at**  
[\*\*ccbargainingteam@gmail.com\*\*](mailto:ccbargainingteam@gmail.com)

Sonia Brown, 2-1-1

Carol DeSalles, 2-1-1

Elizabeth Duncavage, Crisis Department  
Carly Howard, Warm Line  
SK Lewis, Crisis Department  
Geoffrey Mattens, Recovery Help Line  
Darby Robertson, Crisis Department  
Stephen Stott, Community Training  
Sarah Welch, Crisis Department  
Shaun Witcher, Teen Link

**Questions? Tara Powell, OPEIU LOCAL 8 Union Representative, can be reached at [Tara@opeiu8.org](mailto:Tara@opeiu8.org).**

