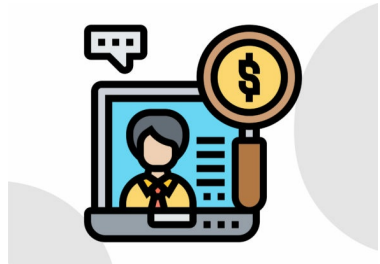


Union 
Update

OPEIU
Local 

for OPEIU Local 8 members at Kaiser Permanente/Washington



HRConnect Issues

OPEIU Local 8 members at Kaiser have worked hard throughout this pandemic and come in to work despite all the concerns regarding COVID-19. Employees have an expectation to be paid on time and correctly! Kaiser still has not fixed this situation, and that is just not acceptable.

Our Union has filed a group grievance on this to demand that Kaiser gets the many problems with HRConnect fixed immediately, and ensure that every one of us is “made whole.”

If you have experienced pay issues or other benefit issues, submit a ticket through National HR: [Direct Access Inquiry Form](#). Once that form is completed, use the case # you received to complete the KPWA (local) [Paycheck Issues Intake Form](#). You can also contact Shauna Straight, KPWA Manager of Employee and Labor Relations, e-mail: Shauna.L.Straight@kp.org. Also, continue to make sure you contact your Union Representative to make sure we are aware of the issues you are experiencing.

Questions? Your Kaiser Permanente Representatives are

Bobbie Pringle, Contract Specialist, Bobbie@opeiu8.org

Supports Union Representatives and members on all labor related issues

Leslie Liddle, Union Representative, Leslie@opeiu8.org

Covers South Sound area and Eastern Washington

Patrick Pedersen, Union Representative, Patrick@opeiu8.org

Covers North Sound area and the PCAC

Tara Powell, Union Representative, Tara@opeiu8.org

Covers the Renton Campus excluding the PCAC

Want to stay informed about union negotiations, meetings, and actions in your workplace?

Text **Local 8** to **97779** to receive text updates.

It will prompt you to let us know your name and where you work to make sure you get the right updates. (Message and data rates may apply).

Visit our website



OFFICE AND PROFESSIONAL EMPLOYEES INTERNATIONAL UNION LOCAL 8

OPEIU Local 8 | 800-600-2433 | Fax 206-441-0207 | opeiu8@opeiu8.org | www.opeiu8.org

STAY CONNECTED

